



Whitehall Close, Waltham Abbey, EN9

BUTLER  STAG



**Guide Price £825,000-
£850,000.**

A lovely four bedroom detached family home positioned in a quiet cul-de-sac, offers the quiet countryside feel.

- Detached Family Home
- Stunning Throughout
- Off Street Parking/Garage
- Four Bedrooms
- Spacious Lounge/Kitchen Breakfast Area
- Heated Swimming Pool

This stunning detached property boasts extensive living space arranged over two floors. The ground floor comprises a stunning kitchen/breakfast room, a bright spacious open living/dining room with large french doors which leads you into the picturesque landscaped garden, lastly the study and W/C completes this floor.

The first floor hosts a large family bathroom with both shower and separate bath tub, four good size bedrooms, with the master having the added bonus of a large balcony with views across the garden.

Council-Epping Forest
Tax Band-G

Externally the property offers off-street parking for several vehicles, secure attached garage and side access leads to the rear of the property where you will find the patio area with composite decking steps leading to the outdoor heated pool. To the rear of the garden you are greeted by a large covered seating area which is ideal for entertaining. Completing the garden is the boarding variety of trees, hedging, shrubs and flowers.

It's a fabulous location and one that has a real countryside feel with lots of countryside walks, you can wander down to the local array of cosy local pubs and restaurants for an early evening G&T, but at the same time you can hop on the Central Line at Epping Underground station, or the mainline at Harlow, and be in the City centre in 30 to 40 minutes.

Council-Epping Forest
Tax Band-G

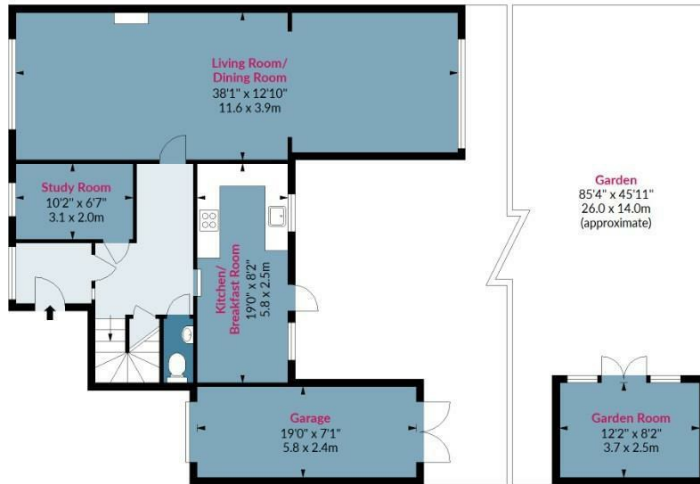




Whitehall Close, EN9

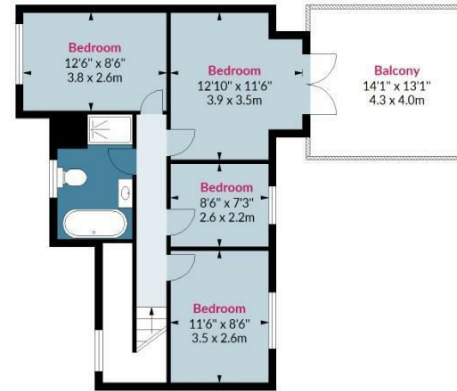
Approx. Gross Internal Area 1481 Sq Ft - 137.58 Sq M (Excluding Garden Room)
Approx. Gross Internal Area 1581 Sq Ft - 146.87 Sq M (Including Garden Room)

BUTLER & STAG



Ground Floor

Floor Area 891 Sq Ft - 82.77 Sq M



First Floor

Floor Area 590 Sq Ft - 54.81 Sq M

Floor plan is for illustrative purposes only and is not to scale. Every attempt has been made to ensure the accuracy of the floor plan shown, however all measurements, fixtures, fittings and data shown are an approximate interpretation for illustrative purposes only.
lpaplus.com

BUTLER & STAG

☎ 01992 667666

🏠 4 Forest Drive, Theydon Bois, Essex, CM16 7EY

✉ theydon@butlerandstag.com

IMPORTANT NOTICE - These particulars have been prepared in good faith and they are not intended to constitute part of an offer or contract. We have not performed a structural survey on this property and the services, appliances and specific fittings have not been tested. All photographs, measurements, floor plans and distances referred to are given as a guide and should not be relied upon.

www.butlerandstag.uk